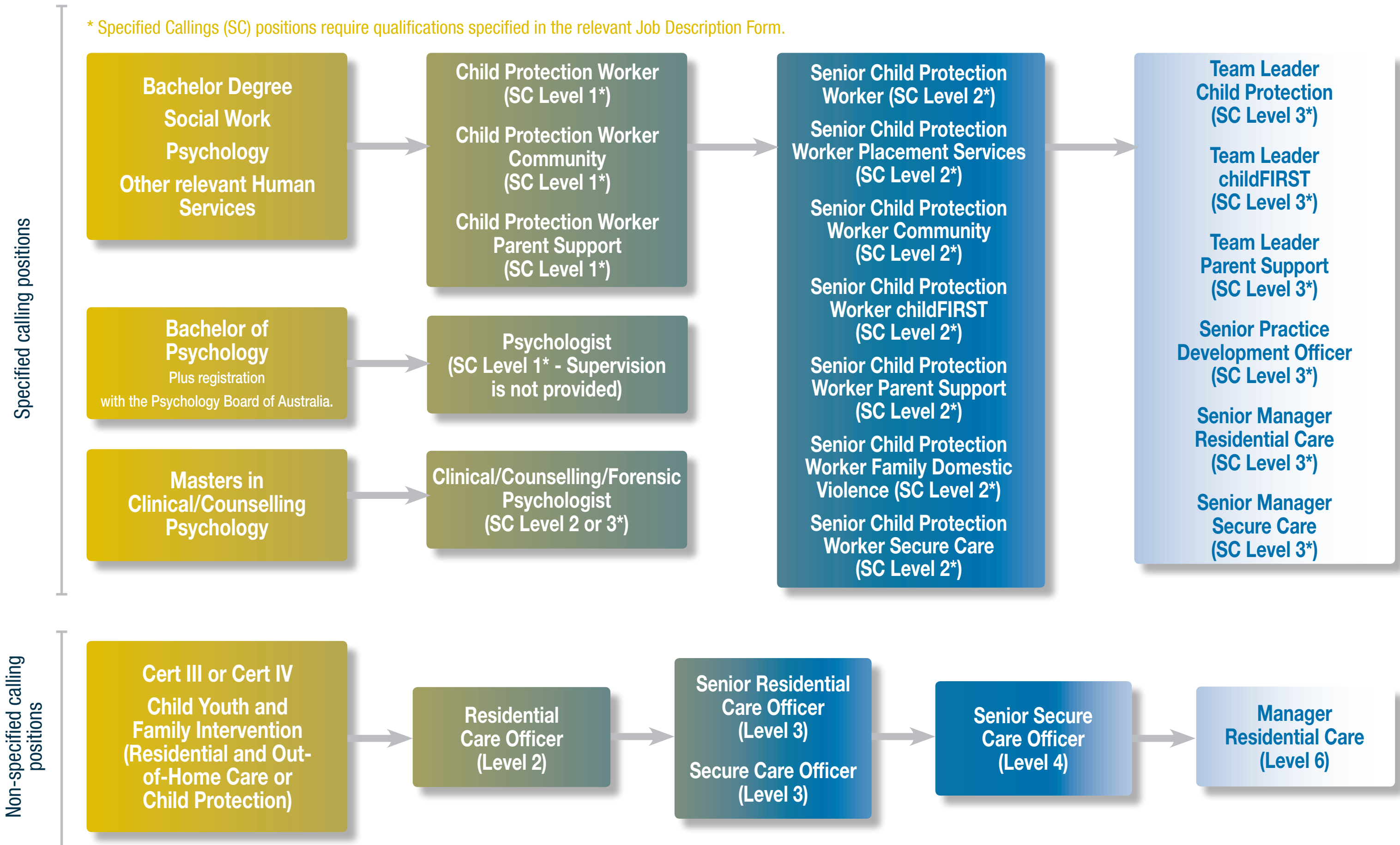


# CAREER AND EDUCATION PATHWAYS WITHIN THE DEPARTMENT FOR CHILD PROTECTION AND FAMILY SUPPORT

\* Specified Callings (SC) positions require qualifications specified in the relevant Job Description Form.



# WHAT WILL I DO AS A...?



## SPECIFIED CALLING POSITIONS

### Child Protection Worker SC Level 1

You will work alongside families to strengthen their capacity to provide care and safety for children and other family members. You will also provide reports and recommendations to case conferences, reviews, court and other agencies in relation to the care and management of children.

### Child Protection Worker Community SC Level 1

You will educate and inform community members on child safety within family and residential settings. You may also be required to assist in the investigation of serious concerns about the welfare and safety of children and recommend appropriate courses of action.

### Child Protection Worker Parent Support SC Level 1

You will undertake assessments and develop and supervise case management plans for families in need of support. You will engage with parents, children and families to provide advice and monitor the progress of the participants and recommend support strategies.

### Psychologist SC Level 1

You will conduct psychological assessments and contribute to the development of individual therapeutic plans for children and young people in care. You will consult with departmental staff on behavioural interventions and assist with the learning and development of skills in psychological intervention.

### Senior Child Protection Worker SC Level 2

You will provide a consultative and support service to field staff and service providers and undertake field work duties of a complex nature. You will also undertake assessments, planning and intervention at an advanced level.

### Senior Child Protection Worker Placement Services SC Level 2

You will collaborate with district staff, foster carers, community groups and other stakeholders to develop local resources to meet the needs of children and young people in care. You will also develop strategies to achieve quality care experiences and outcomes for children and young people in care.

### Senior Child Protection Worker Community SC Level 2

You will undertake complex case work activities and provide advice and expertise to district staff on child safety and protection issues, and family and domestic violence. You will also investigate serious concerns about the welfare and safety of children and take appropriate action, as well as supervise other staff as required.

### Senior Child Protection Worker ChildFIRST SC Level 2

You will undertake specialist child interviews and provide advice to district staff on child safety and protection issues. You will be required to work collaboratively with the Western Australia Police and other agencies to ensure integrated service provision.

### Senior Child Protection Worker Parent Support SC Level 2

You will undertake complex assessments and interventions involving parents, children and families, and develop plans for parenting and family interventions. You will also prepare and present reports on the progress of participants and recommend appropriate actions and strategies, as necessary.

### Senior Child Protection Worker Family Domestic Violence SC Level 2

You will work collaboratively with the community, Western Australia Police, and other agencies and respond to reports and concerns regarding the safety and wellbeing of children and families who are experiencing or contributing to domestic violence. You will provide a crisis intervention service to families with children experiencing domestic violence. You will also provide support to families experiencing domestic violence and make appropriate referrals to ensure the safety of individuals and families.

### Senior Child Protection Worker Secure Care SC Level 2

You will respond to concerns regarding the safety and wellbeing of children by carrying out enquiries, assessments and interventions as required. You may also be required to collect evidence that may be used in taking intervention action. You will also engage with children, and families of children residing in the Secure Care facility, to promote their safety and ensure that children in care receive appropriate treatment that addresses their individual needs.

### Clinical/Counselling Psychologist SC Level 2 or 3

You will conduct psychological assessments of children, adolescents and families and undertake preventative and therapeutic interventions. You will also supervise psychologists and clinical or counselling psychology students on placement, as required. You may collaborate with children and staff within a residential care setting which caters specifically for children and young people requiring extraordinary care and support.

### Team Leader Child Protection SC Level 3

You will liaise with other colleagues to plan and manage activities within the district and promote sound, innovative and responsible case work and community work practices. You will supervise and support team members, distribute workload and provide learning and development opportunities to the team.

### Team Leader ChildFIRST SC Level 3

You will manage and lead a ChildFIRST team of specialist child interviewers and ensure professional practice, standards and policies are adhered to. You will coordinate strategy meetings between the ChildFIRST team, Western Australia Police and other departmental staff to ensure an integrated service, as well as provide supervision to child interviewers and oversee the quality of visually recorded interviews.

### Team Leader Parent Support SC Level 3

You will manage and supervise the Parent and Family support team which undertakes family assessments and provides appropriate referrals. You will assist in the development of intervention plans that aim to support parents and carers, as well as undertake complex case work, as required. Your ability to liaise with other agencies and engage the community will ensure that the services the team provides will be relevant to the community's cultural and religious sensitivity.

### Senior Practice Development Officer SC Level 3

You will provide mentoring and coaching to demonstrate case practice methods and contribute to staff learning and development. You will develop and implement departmental policies, programs and organisational activities and contribute to the improvement of practice standards.

### Senior Manager Residential Care SC Level 3

You will manage the day to day operations of a residential care facility, including the supervision a team of professional residential staff that delivers therapeutic care to children in care, promoting innovative and responsible case work and community work practice. You will work with the management team to provide information and advice that will assist the development of therapeutic responses. You will provide leadership and support staff development.

### Senior Manager Secure Care SC Level 3

You will manage the day to day operations of the secure residential care facility, including providing leadership and support to staff. You will maintain a safe, secure and comfortable environment for young people, including taking physical control of young people when necessary. You will also work alongside community agencies to address local issues where necessary.

## NON-SPECIFIED CALLING POSITIONS

### Residential Care Officer Level 2

You will provide therapeutic care to children and young people who have experienced some level of trauma and abuse, and who at times demonstrate challenging behaviours. You will also coordinate and participate in activities to promote positive growth and development in these children and young people.

### Senior Residential Care Officer Level 3

You will assist in the supervision of Residential Care Officers and work together to ensure the delivery of a high standard of therapeutic care. As a member of the therapeutic team, you will be involved in the implementation of individual therapeutic plans for children and young people in care.

### Secure Care Officer Level 3

You will be responsible for the coordination of admission, assessment and 48 hour care plans for young people assigned to the secure care residential facility. You will also provide therapeutic care to young people and provide a high standard of group care, ensuring a positive and safe environment is maintained for young people. You will also be required to engage with families of young people in secure care.

### Senior Secure Care Officer Level 4

You will coordinate the day-to-day care of children entering the secure care facility, as well as undertake individual assessments and provide a high standard of therapeutic care. You will also provide supervision to Secure Care Officers and be responsible for the management of the secure care facility's security system and processes.

### Manager Residential Care Level 6

You will effectively manage the day to day operations of a residential care unit which provides accommodation to children in the Department's care. You will provide supervision, promote responsible case work and community work practice and ensure a high quality service is provided at all times, including the maintenance of a safe and comfortable environment for young people.